

Lighting Control Solved



- Ideal for small and medium size venues and productions
- Simple, affordable, powerful
- Intuitive natural-language control
- Advanced show control functions
- Support for external monitor
- Silent, compact design

EASY TO USE TASK-ORIENTED NAVIGATION

Select the Lights you want to control.

- No command line to learn – manage images, not numbers
- Cognito² groups Lights automatically to reduce setup time
- Groups you create reduce programming time
- Real-time visual feedback of Lights at a glance
- Extensive library of over 2000 fixture definitions

Control your Lights quickly and easily with a large, well-ordered assortment of tools.

- Never look at a DMX chart again
- Tools categorized by Intensity, Color, Position and Shape – recall them in an instant on the console hardware
- Selectable Color Temperatures and Color Spaces
- Powerful fanning tools give you that “big look” quickly and with ease
- Apply comprehensive, simple-to-adjust effects to any attribute

Record what you see for Memory, Cue and Time-clock event playback.

- Save looks to an unlimited number of Memories on sliders and buttons for on-the-fly playback
- No cue number constraints – record, drag and drop them on an unlimited number of Playlists for scripted shows
- Capture Groups, Colors, Positions and Shapes into custom reference libraries
- Move In Black and versatile cue timing options enable nuanced show playback
- Actions on Cues and Memories associate powerful show control functions with any trigger

Play back your work and see it come together.

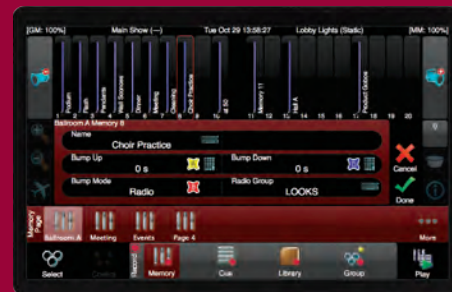
- Hands on and heads up: Playback is a breeze with well-positioned controls
- Repurpose your recorded cues as Chases. Change direction, fade rates or tap in a beat to match your music
- Achieve perfect cue execution every time using external or internal timecode
- Schedule events to run at a specific time of day or relative to astronomical events based on your location
- Password-protected Wall Station mode lock-out function presents a set of Memories or a Playlist for operation from the touchscreen
- DMX512 IN enables Memory “Wing” expansion from faders on a remote DMX512 console



SELECT



CONTROL



RECORD



PLAY

LIGHTING CONTROL CONSOLE

Cognito² will not intimidate the less-experienced user and will not disappoint the most demanding professional.

- Fully operational with or without external monitor
- DMX512 and Ethernet output including Art-Net, KiNET, E1.31 sACN and Pathport
- **neato™** iOS App extensions for remote control and playback
- Separate Intensity, Color, Position and Shape attribute timing
- Automatic Move-In-Black feature with Memories and Cues
- Power-over-Ethernet operation
- 7" capacitive touchscreen
- 7U Rack-mount kit option
- Multi-platform off-line editor
- Continually updated library of fixture definitions available on-line

Cognito² is available in five models: Starter, Pro512, Pro1024, Pro1536 and Pro2048. Each is priced to suit the artistic needs of:

- Schools
- Houses of worship
- Touring productions
- Museums
- Theme parks
- Community theaters
- Film and television productions
- Corporate theaters



| Features | Starter | Pro512 | Pro1024 | Pro1536 | Pro2048 |
|------------------------------------|-------------|----------------|----------|----------------|----------------|
| Output addresses | 512 | 512 | 1024 | 1536 | 2048 |
| Pathport | Yes | Yes | Yes | Yes | Yes |
| Art-Net | Not enabled | Yes | Yes | Yes | Yes |
| ANSI E1.31 sACN | Not enabled | Yes | Yes | Yes | Yes |
| KiNET | Not enabled | Yes | Yes | Yes | Yes |
| DMX512 OUT ports | 1 | 2 ¹ | 2 | 2 ² | 2 ² |
| DMX512 IN port | Not enabled | 1 | 1 | 1 | 1 |
| MIDI Show Control | Not enabled | Yes | Yes | Yes | Yes |
| MIDI Timecode | Not enabled | Yes | Yes | Yes | Yes |
| RS232 serial / Telnet support | Not enabled | Yes | Yes | Yes | Yes |
| Contact closures | Not enabled | 3 | 3 | 3 | 3 |
| Time and astronomical scheduling | Not enabled | Yes | Yes | Yes | Yes |
| Accessories | | | | | |
| 90V to 240V Regulated power supply | Yes | Yes | Yes | Yes | Yes |
| Dust cover | Yes | Yes | Yes | Yes | Yes |
| 7U Rack-mount kit | Optional | Optional | Optional | Optional | Optional |

Notes:
1. Universe 1 mirrored on both OUT ports. 2. Pathport gateway required for Universe III and IV output.

Protected By US Patents D707189, 9014828 and patents pending.



A pioneer in entertainment lighting, Pathway Connectivity is renowned for solid, easy-to-use equipment with comprehensive, robust features.

Our reputation for innovation and reliability is based on over twenty-five years commitment to enhancing the functions and interoperability of lighting systems around the world.



For demonstration and training videos, visit our Pathway Connectivity YouTube Channel at www.youtube.com/pathwayconnectivity

#103-1439 17 Avenue SE
Calgary AB Canada T2G 1J9
T 403.243.8110
F 403.287.1281
pathwayconnect.com

©2014-2015 Acuity Brands Lighting, Inc. All rights reserved.
Rev. 09/15 PW_2142